

Lead

My War

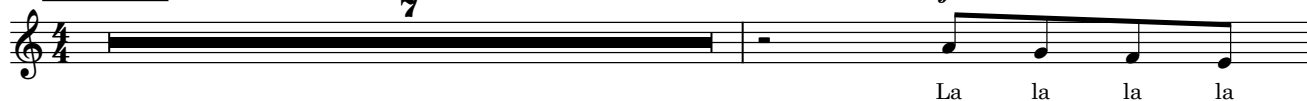
Shinsei Kamattechan
Arr. Yumi

A: Intro

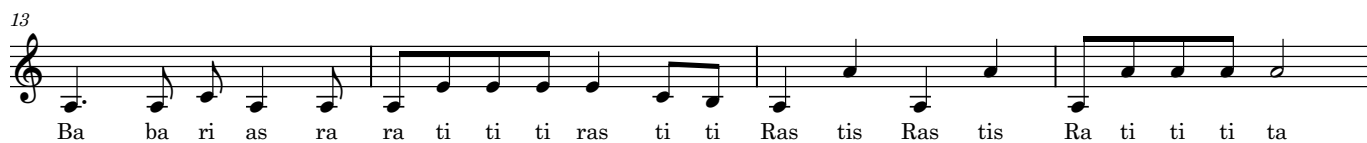
$\text{♩} = 145$

7

f

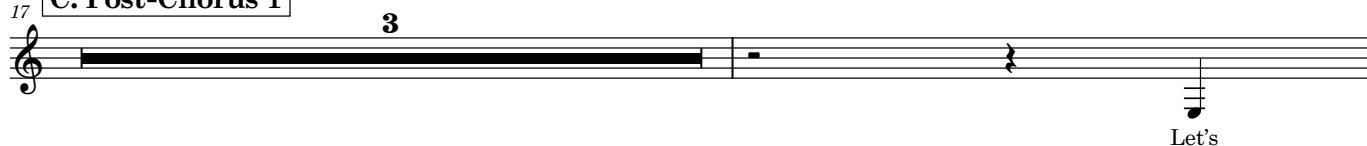


B: Chorus 1

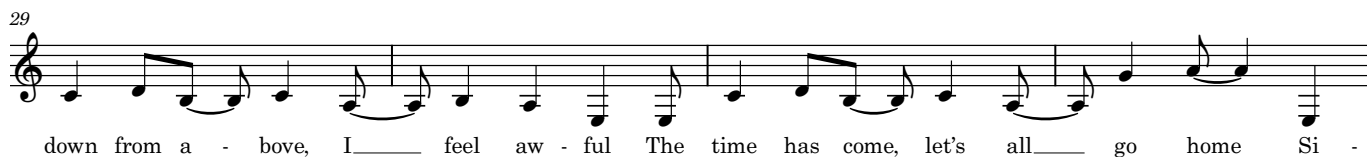
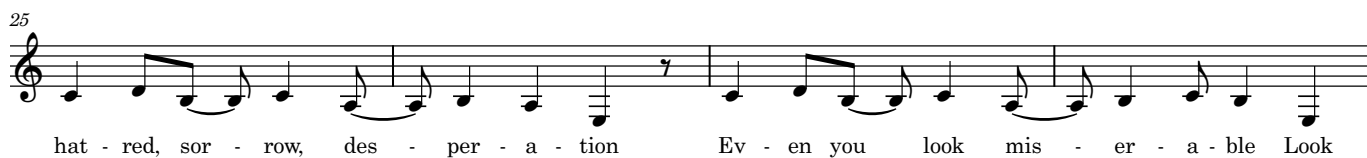


C: Post-Chorus 1

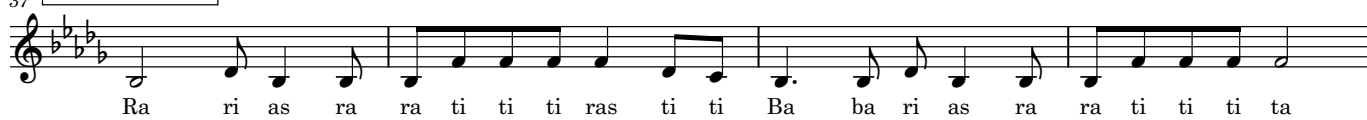
3



D: Verse 1



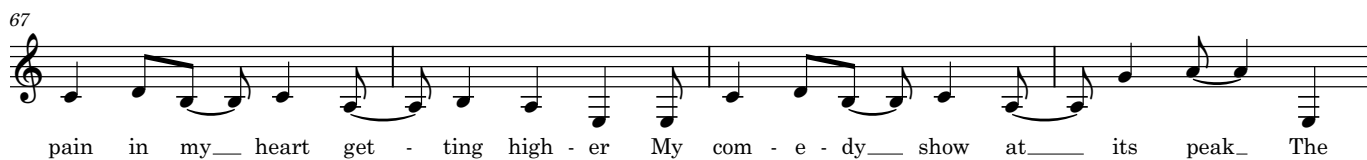
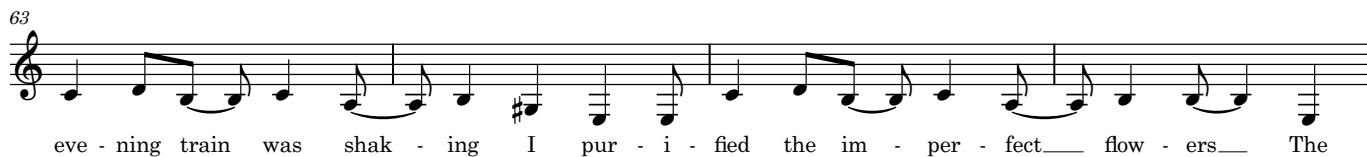
37 **E: Chorus 2**



53 **F: Post-Chorus 2**



59 **G: Verse 2**



71



frogs were cry - ing on___ our way home This is my last_ war___ La la la la

75 **H: Chorus 3**



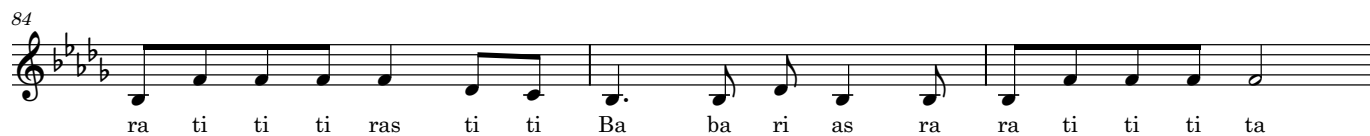
Ra ri as ra ra ti ti ti ras ti ti Ba ba ri as ra ra ti ti ti ta

79



Ba ba ri as ra ra ti ti ti ras ti ti Ras tis Ras tis Ra ti ti ti Ti ta ta ta Ra ri as ra

84




ra ti ti ti ras ti ti Ba ba ri as ra ra ti ti ti ta

87



Ba ba ri as ra ra ti ti ti ras ti ti Ras tis Ras tis Ra ti ti ti tas

91 **I: Post-Chorus 3** **J: Bridge**



Des - truc - tion re - gene - ra - tion you are the real en - e - my!

103 **K: Bridge 2**



Do do do do do do do do do do do do do do do do

107



do do do do do do do do do do do do do do do do

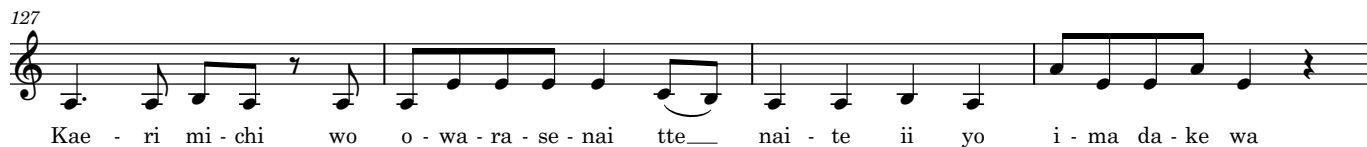
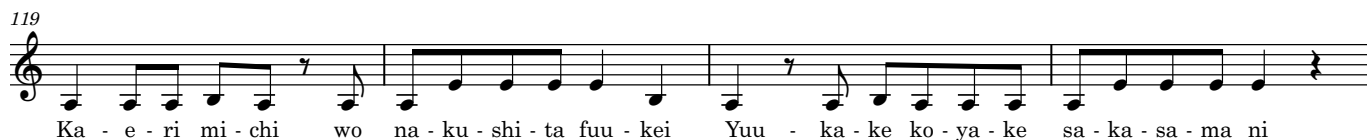
111



do do do do do do do do do do do do do do do do



L: Verse 3



说唱，音符位置只是大概的高低参考



M: Chorus 4

Drum & Bass Solo



说唱，音符位置只是大概的高低参考



说唱，音符位置只是大概的高低参考



Lead

My War

5

N: Post Chorus 4

151



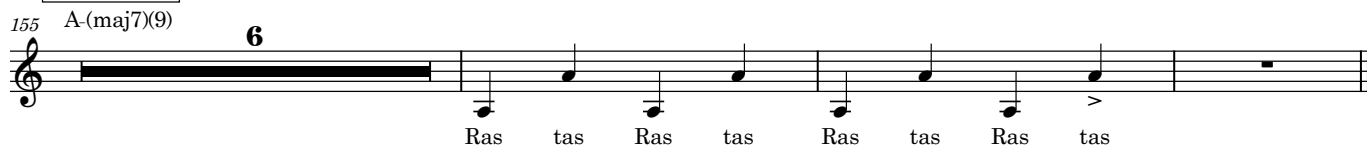
ne ne - na - ku - cha ne

Detailed description: This block contains the musical notation for the Post Chorus 4 section, starting at measure 151. The notation is in treble clef with a key signature of three flats (B-flat, E-flat, A-flat). The melody consists of a half note G4, followed by a quarter note A4, a quarter note B-flat4, a quarter note C5, a quarter note D5, a quarter note E5, a quarter note F5, and a half note G5. The lyrics 'ne ne - na - ku - cha ne' are written below the notes.

O: Outro

155 A-(maj7)(9)

6



Ras tas Ras tas Ras tas Ras tas

Detailed description: This block contains the musical notation for the Outro section, starting at measure 155. The notation is in treble clef with a key signature of three flats. The melody begins with a whole note chord A-(maj7)(9), indicated by a thick black bar. This is followed by a measure rest, then a series of eighth notes: G4, A4, B-flat4, C5, D5, E5, F5, and G5. The lyrics 'Ras tas Ras tas Ras tas Ras tas' are written below the notes. The section ends with a double bar line.